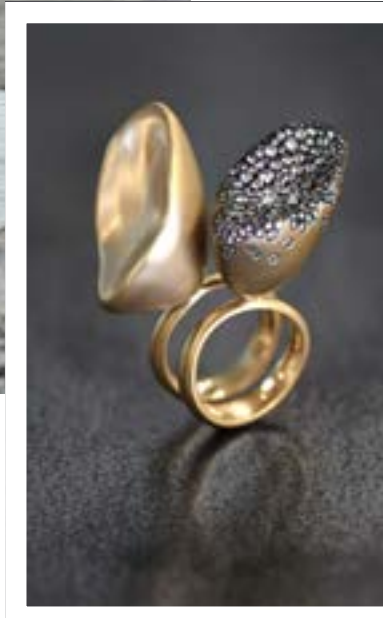


Left: Fuse Elegance earlobe with white diamond from the Fuse Collection.
Below: Nada's studio



5:50AM My go-to as soon as I get up every morning is a family cuddle in bed with my husband Elias and three children, Antoun, Malak and Kayan. I am overwhelmed by a sense of gratitude and a drive to get up, to rise up and to continue my strive to do better for my country and to safeguard the future of my children. Lebanon, a country in turmoil, keeps that at the top of my mind. **6:00AM** This is followed by a 60-minute exercise routine which ranges from a high-impact workout to a yoga and meditation session depending on the day. **7:10AM** A power shake made by my husband and quick breakfast with the family before I drop the kids off by the school bus and start the day. My jewellery is a reflection of my emotions, thoughts and feelings; each tells a story and hence is the most important part of my outfit. Depending on my mood, I choose between my 'Heritage & Heirloom' cuffs and my 'IDentity' rings; the bold and earthy 'Malak' rings; the feminine 'Power of Light' bracelets, the defiant 'Baby Malak Flourish' pieces or the passionate 'Fuse' Collection. **9:00AM** My work mornings are spent in my design studio creating new pieces. I am inspired by everything around me and Beirut, my Beirut, is a constant muse with every corner narrating a story that sneaks its way into my designs. I work on my sketches and then shift to the atelier to work jointly with our craftsmen on bringing each piece to life. Our pieces are handcrafted and our gem combinations that stud them are handpicked for each jewel. **AT 2:30PM** I head home for a delicious Lebanese home-cooked lunch with the family, and homework check with the children before I head back to work. **4:00PM** Afternoons are usually spent around customers and with my sales team in different points of sales around the city. This is a favourite part of my day as I love to see how my jewellery 'calls to' the visiting customers and becomes part of their stories. Many times, I see them fall in love with one piece but feel that another calls to them and resonates more with who they are. So the team or I help them make their choice. **AT 5:30PM** I head back to the office and do a quick debrief on the day with the team. My production and international marketing team brief me on updates from our international retailers. I work with the marketing team on our media plans and social posts and catch up on emails, then sneak a few minutes with the craftsmen before going back home to spend the evening with family. **AT 6:30 PM** The early part of the evening is spent dining with the family, rerunning the day's events, listening to the children's stories or watching them practice their music. **8:00PM** Brings an hour's stroll in the streets of Beirut; sometimes with friends but mostly with my husband. The city's joie de vivre removes the day's stress and its soul awakens my senses. A walk in the vieux quartiers of Gemmayzeh, the stairs of Mar Mikhaël and the majestic Sursock Museum fill me with inspiration and a sense of lightness. **AT 10:00PM** We head home for a warm bath, a quick email catch up, a sketch of something that forms part of a design inspiration I am working on and a to-do list for the next day. **11:30PM** signals the time to turn out the lights ahead of an early start. ■



24 hours WITH... NADA GHAZAL

What's it like to be founder of the eponymous Beirut-based fine jewellery house Nada Ghazal for a day? We follow the restless businesswoman around the clock

IMAGES COURTESY OF NADA GHAZAL

Left: Baby Malak Flourish Marquise rings, pure and with champagne diamond; Fuse Elegance wristband & Fuse Elegance earlobe with diamond

Baby Malak Original Round Cuff with champagne diamond and Baby Malak Original Round Duo Cuff with black diamond from Baby Malak Original collection