

# LUXURY

A full-page photograph of Keira Knightley. She is wearing a white, long-sleeved, floor-length lace dress with a high collar. She has long, wavy brown hair and is looking directly at the camera with a slight smile. Her hands are clasped in front of her, and she is wearing several rings. A large, ornate gold brooch is pinned to the center of her dress. The background is a soft, out-of-focus light green.

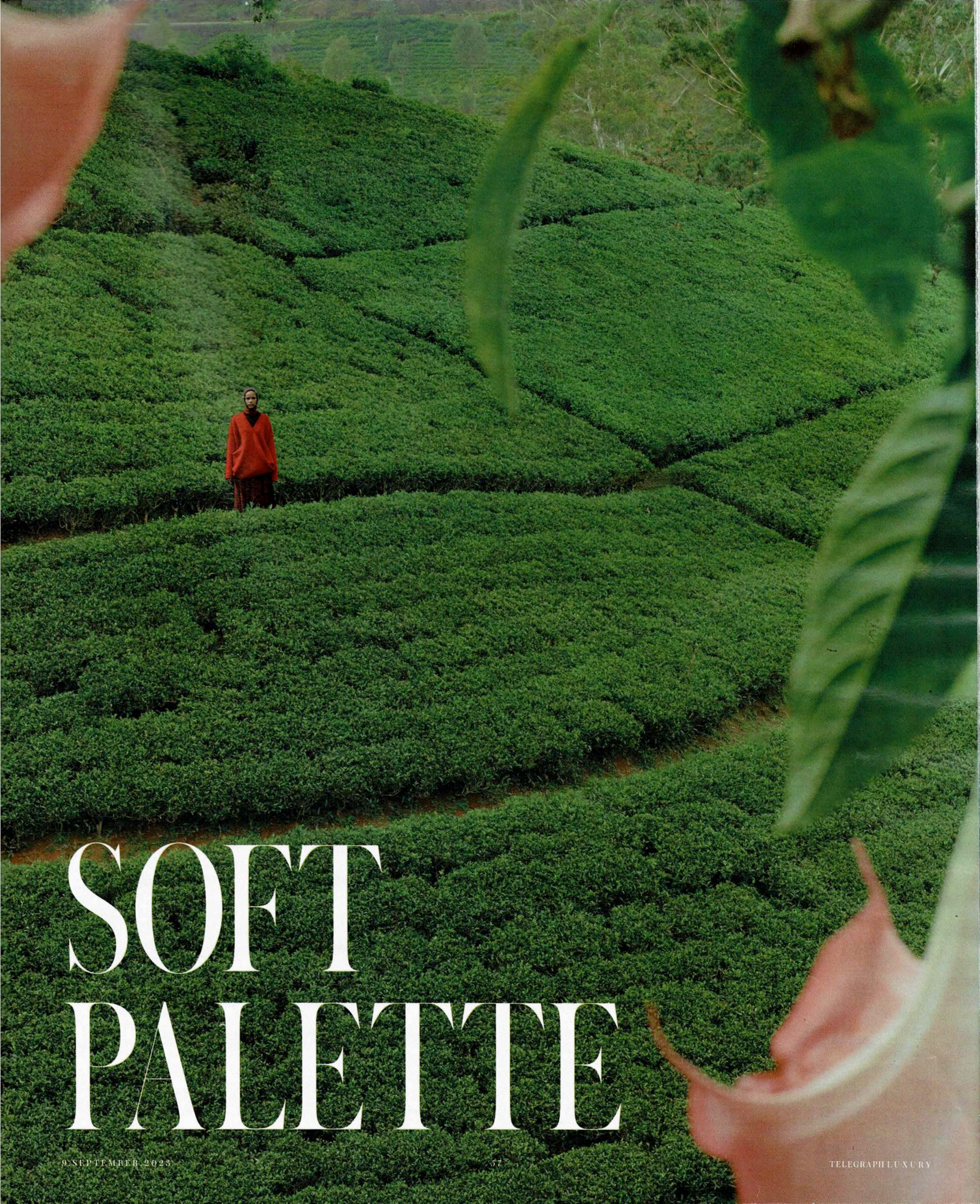
## KEIRA KNIGHTLEY

*On messy motherhood and  
dancing in diamonds*

*Plus*

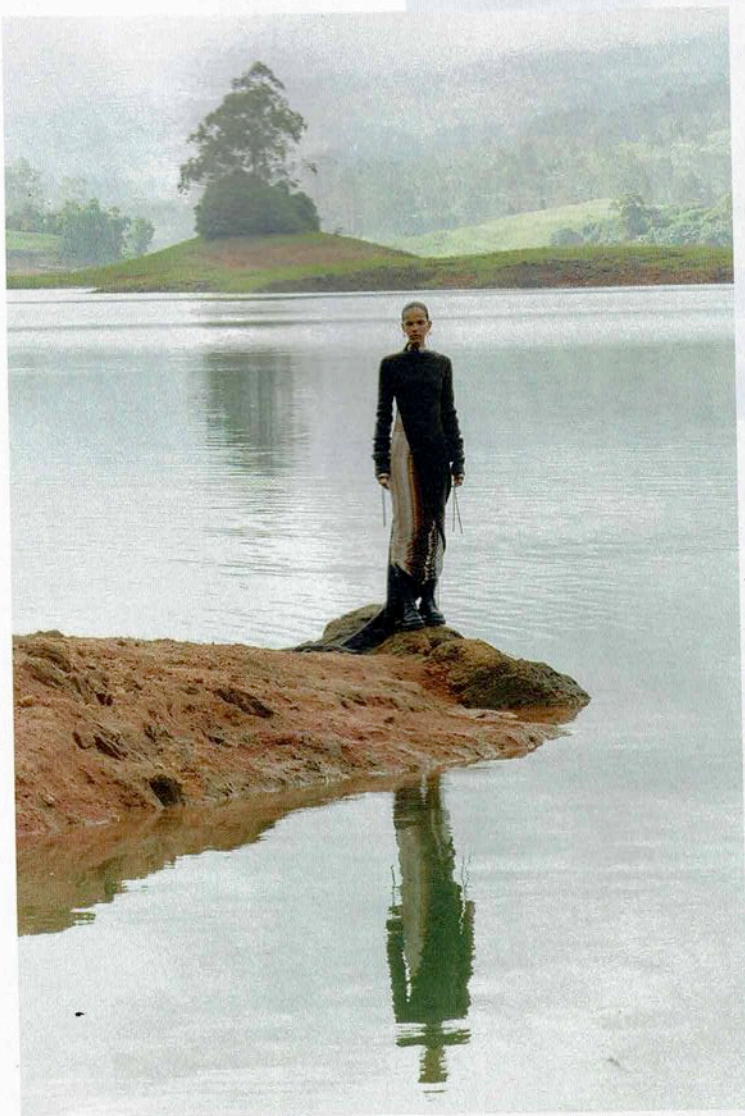
Lisa Armstrong on the suit of the season, the £1,000  
moisturiser and the queen of fine wine – at 98





# SOFT PALETTE





PREVIOUS LEFT Silver necklace, £1,400, Shaun Leane (shaunleane.com). Silver ring, £300, and silver bangles, from £210, all Dinosaur Designs, and silver bracelet, £1,180, Louise Olsen (dinosaurdesigns.co.uk)

PREVIOUS RIGHT Double-face wool knit dress, £2,400, Loewe (loewe.com). Wool-mix wrap skirt, £1,017, Shang Xia (selfridges.com). Merino-silk balaclava, £200, Sulk Knitwear (sulkknitwear.com)

LEFT Felted-wool sweater, £1,410, Louis Vuitton (louisvuitton.com). Cashmere snood, £148, Extreme Cashmere (matchesfashion.com). Socks, stylist's own. Silver hoop earrings, from £275, Shaun Leane, as before

ABOVE Cashmere cowl half cape, £6,455, Rick Owens (rickowens.eu). Cotton dress, £3,360, Missoni (missoni.com). Gold vermeil earrings, £235, Completed Works (completedworks.com), and from £375, Shaun Leane, as before. Gold rings, from £1,785, Nada Ghazal (doverstreetmarket.com). Gold ring, £950, By Pariah (bypariah.com). Brass ring, £120, Dinosaur Designs, as before. Leather boots, £1,136, Marsell (marsell.com)

RIGHT Cotton appliqué top, £589, and matching skirt, £555, both Acne Studios (acnestudios.com). Gold-plated earring, £130, Anissa Kermiche (anissakermiche.com). Other jewellery, as before





OPPOSITE Cashmere-silk knit with lambskin cables, £1,650, Hermès ([hermes.com](https://hermes.com)). Silk organza fringed slip (worn underneath), price on request, Asai ([asaitakeaway.com](https://asaitakeaway.com)). Skirt, £2,750, Fendi ([fendi.com](https://fendi.com))

THIS PAGE Shetland top, £920, and embroidered velour skirt, £4,350, both Prada ([prada.com](https://prada.com))

OVERLEAF LEFT Wool top, £350, Max Mara ([maxmara.com](https://maxmara.com)). Knit dress (worn as skirt), from a selection, Yuhan Wang ([matchesfashion.com](https://matchesfashion.com)). Gold-plated brass necklace, £385, and gold-plated brass earrings, from £135, all Anissa Kermiche ([anissakermiche.com](https://anissakermiche.com)). Brass ring, £120, Dinosaur Designs, as before

OVERLEAF RIGHT Tweedy jumper, £850, and tweedy scarf, £650, both Stella McCartney ([stellamccartney.com](https://stellamccartney.com)). Mohair shorts, and mohair leg warmers, both price on request, Antik Batik ([antikbatik.com](https://antikbatik.com)). Wool balaclava, £150, Herno ([herno.com](https://herno.com)). Calfskin boots, £590, Emporio Armani ([armani.com](https://armani.com)). Silver bangle, £895, Shaun Leane, as before. Silver rings, from £300, and silver bangles, from £210, all Dinosaur Designs, as before

OVERLEAF INSET Gold ring (round), £3,130, Nada Ghazal ([doverstreetmarket.com](https://doverstreetmarket.com)). Brass ring, £120, and brass bangle, £215, both Dinosaur Designs, as before

Model: Natalia Montero at Elite.  
Hair and make-up: Scarlett Burton, using Equinoxe de Chanel and No 1 de Chanel Revitalizing Serum.  
Stylist's assistant: Alice Dench.  
Casting: Kim Turney.  
Shot on location at Ceylon Tea Trails in Sri Lanka ([resplendentceylon.com](https://resplendentceylon.com))





